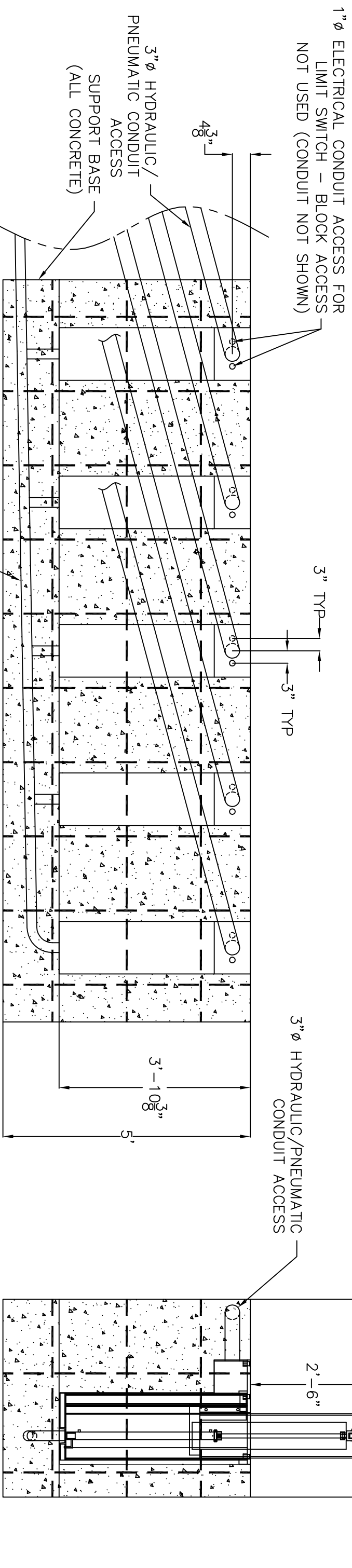


#4 STEEL REBAR
@ 18" TO 24" O.C.

BLACK NON-SLIP POWDER COATING
TOP OF BOLLARD AND FOUNDATION PLATE



3" ϕ HYDRAULIC/PNEUMATIC
CONDUIT ACCESS

2" ϕ CONNECTION TO
POSITIVE DRAIN SYSTEM OR
ALTERNATE DRAIN SYSTEM

3" ϕ HYDRAULIC/
PNEUMATIC CONDUIT
ACCESS
SUPPORT BASE
(ALL CONCRETE)

1" ϕ ELECTRICAL CONDUIT ACCESS FOR
LIMIT SWITCH - BLOCK ACCESS
NOT USED (CONDUIT NOT SHOWN)

NOTES:

1. CONCRETE TO BE 3000 PSI MINIMUM.
2. #4 STEEL REBAR TO BE PLACED IN POUR @ 18" TO 24" O.C. PER ACI CODE.
3. HYDRAULIC AND ELECTRICAL CONDUIT RUN TO HPU.
4. SLEEVE FOR HYDRAULIC HOSE MUST BE PVC/ELEC TYPE CONDUIT & FITTINGS WITH LARGE SWEEPING RADIUS.
5. ALTERNATE DRAIN SYSTEMS MAY BE FRENCH DRAIN OR SUMP PUMP. PRIMARY CASING MUST BE SUPPORTED TOP, AND BOTTOM TO MAINTAIN TOLERANCES DURING CONCRETE POUR. EACH BOLLARD IS THEN INSERTED INTO THE CASING AFTER CONCRETE CURES.
- 6.

TITLE

FOUNDATION DRAWING - SET OF FIVE



3224 Mobile Hwy. • Montgomery, AL 36108-4400
Tel: 334-281-8440 • Fax: 334-286-4320
Website: www.norshieldsecurity.com

REV. NO.	DESCRIPTION	REV. DATE

TOLERANCE $\pm 1/32"$ UNLESS OTHERWISE NOTED	DRAWING NUMBER 300151	SHEET 01 OF 03
<p>DATE 08-15-05 DRAWN BY SS MODEL NUMBER NSS30 OLD MODEL NUMBER BAHS1030</p>		