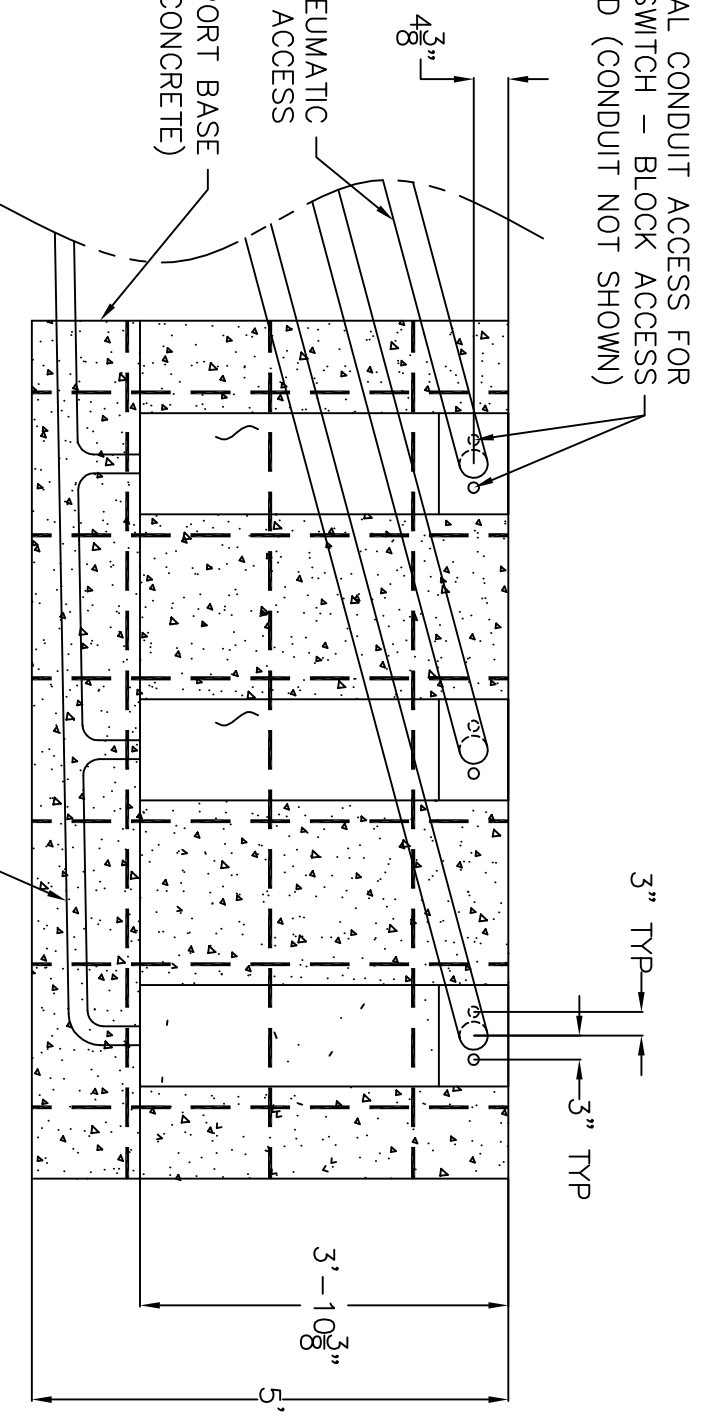
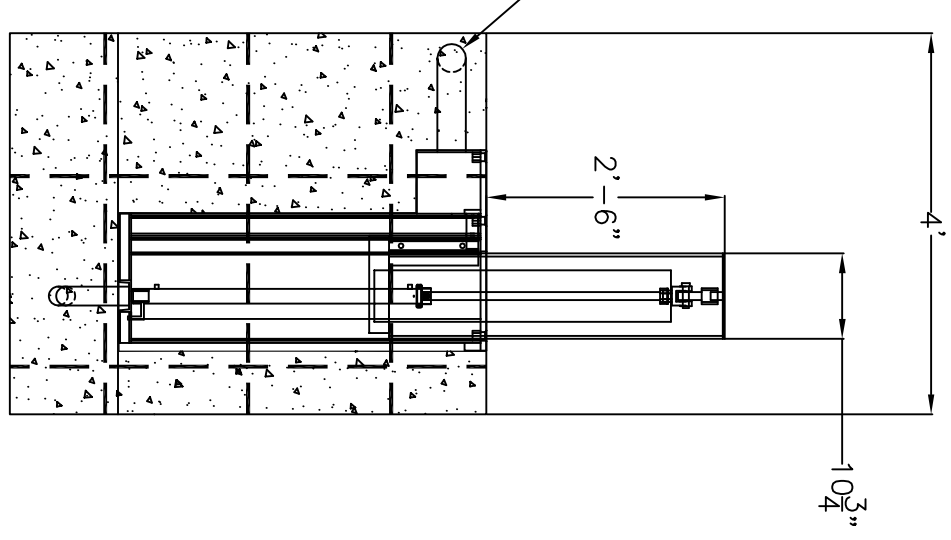


#4 STEEL REBAR
@ 18" TO 24" O.C.
BLACK NON-SLIP POWDER COATING
TOP OF BOLLARD AND FOUNDATION PLATE



3" ϕ HYDRAULIC/PNEUMATIC
CONDUIT ACCESS



NOTES:

1. CONCRETE TO BE 3000 PSI MINIMUM.
2. #4 STEEL REBAR TO BE PLACED IN POUR @ 18" TO 24" O.C. PER ACI CODE.
3. HYDRAULIC AND ELECTRICAL CONDUIT RUN TO HPU.
4. SLEEVE FOR HYDRAULIC HOSE MUST BE PVC/ELEC TYPE CONDUIT & FITTINGS WITH LARGE SWEEPING RADIUS.
5. ALTERNATE DRAIN SYSTEMS MAY BE FRENCH DRAIN OR SUMP PUMP. PRIMARY CASING MUST BE SUPPORTED TOP, AND BOTTOM TO MAINTAIN TOLERANCES DURING CONCRETE POUR. EACH BOLLARD IS THEN INSERTED INTO THE CASING AFTER CONCRETE CURES.

REV. NO.	DESCRIPTION	REV. DATE

<p>TITLE FOUNDATION DRAWING - SET OF THREE</p>	
<p>3224 Mobile Hwy. • Montgomery, AL 36108-4400 Tel: 334-281-8440 • Fax: 334-286-4320 Website: www.norshieldsecurity.com</p>	
<p>TOLERANCE \pm 1/32" UNLESS OTHERWISE NOTED</p>	<p>DRAWING NUMBER 300131</p>
<p>DATE 08-15-05</p>	<p>DRAWN BY SS</p>
<p>MODEL NUMBER NSS30</p>	<p>SHEET 01 OF 05</p>
<p>OLD MODEL NUMBER BAHS1030</p>	