



3224 Mobile Highway
Montgomery, Alabama 36108-4454
334 281 8440 tel 334 286 4399 fax

Clear Opening Description:

GENERAL:

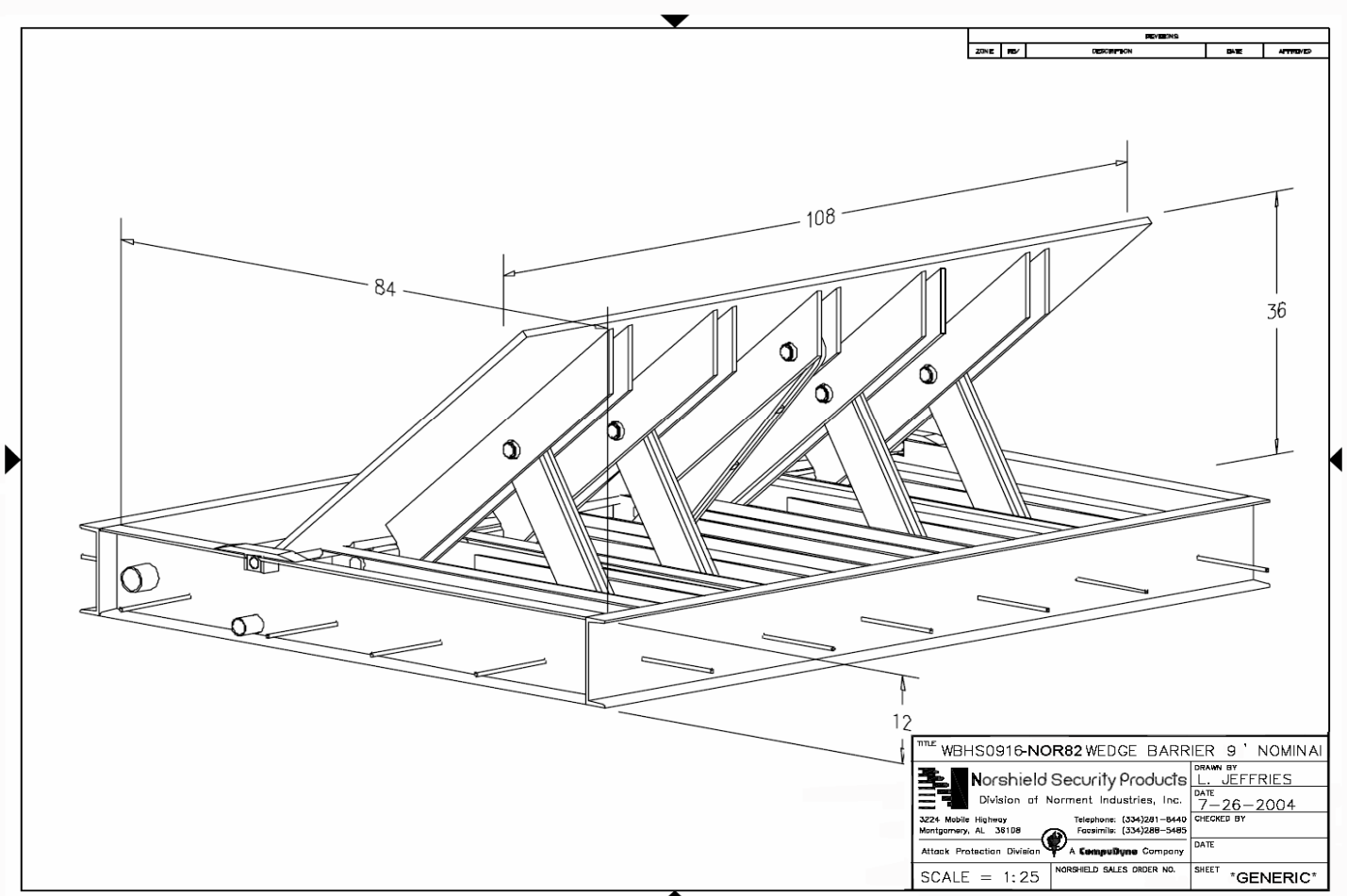
The clear opening of the barrier is defined as the space horizontal width of attack plate. Depending upon the barrier, the attack plate can be a rising steel plate or a set of rising cylindrical bollards. Each of our barriers are meant to control traffic and if need be suppress a vehicle attack in a typical lane. However, the lane of traffic varies from site to site. Most often, we find that a traffic lane is 12' (144") wide. A 9' (108") vehicle barrier is designed to defend a 12' lane of traffic leaving air space on each side of the barrier measuring a 1.5'. The 9' barrier unit is the unit tested by the Department of State in their K-rated crash tests. 1.5' of space is an accepted standard. In some cases where customer request, design build, or high security concerns lead to eliminating air space on either side of the barrier, Norshield can and will engineer a barrier to fit tightly in the defined space (traffic lane) leaving little or no air space. The option is left to the discretion of the engineers, architects, or the end user.



3224 Mobile Highway
 Montgomery, Alabama 36108-4454
 334 281 8440 tel 334 286 4399 fax

NOR82:

The NOR82 is the standard for wedge barriers, and employs a 9' barrier to defend a 12' lane. This leaves the standard 1.5' on each side of the barrier. For lanes measuring up to 17', the NOR82 can expand its rising plate and overall size to accommodate a 14' clear opening (14' rising steel attack plate).





3224 Mobile Highway
Montgomery, Alabama 36108-4454
334 281 8440 tel 334 286 4399 fax

NOR200:

The NOR200 unit has expanded that standard as the 9' unit that was DOS crash tested and certified under the DOS standards spans only around 8'. This leaves 2 feet on each side of the rising posts. The unit passed the DOS K-12 test with flying colors expanding the acceptable standard to include the unique design employed by the NOR200.

